

'NANTA' IN YOUR MUSIC CLASS: *HOW TO CREATE MULTICULTURAL MUSIC WITH KOREAN DRUMS AND KITCHEN UTENSILS*

The purpose of this clinic is to introduce NANTA, a South Korean musical, to all music teachers who want to use multicultural curriculum.

• KOREAN TRADITIONAL INSTRUMENTS: SAMUL-NORI



Zing
a Korean gong



Jang-Gu
a double-headed drum
played with a stick



Kweng-Gua- Ri
a small gong made of
brass played with
a wooden stick



Book
a Korean drum

• KOREAN TRADITIONAL RHYTHMS

Ja-Jin-Mori



(Together) (Together) (Together) (Left) (Right)(Left)

Dung, Duck- Duck, Kung- Duck, Kung

Whi-Mori

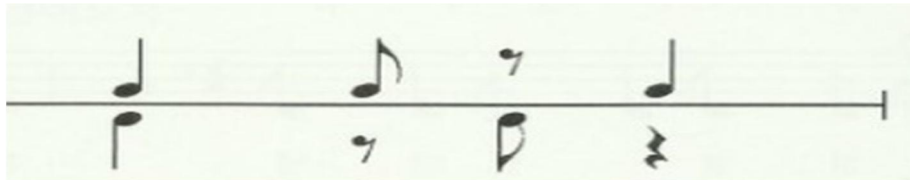


(Together) (Right) (Right) (Left) (Right) (Left)

Dung Dung Dung- duck, Kung- duck

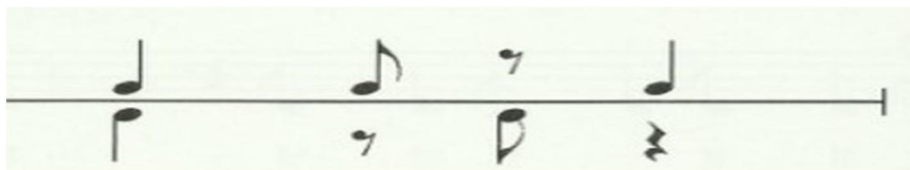
- VARIATIONS OF RHYTHMS: JA-JIN-MORI

1. SINGLE – SINGLE-



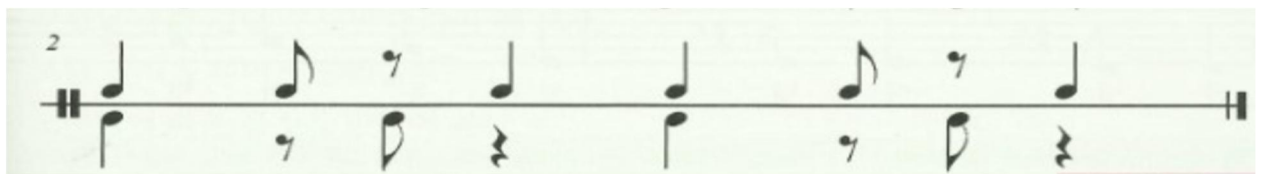
Dung Duck Kung Duck

2. DOUBLE- DOUBLE-



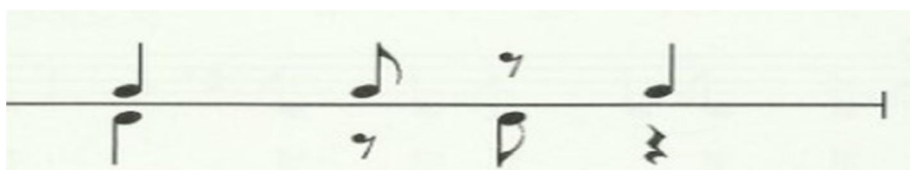
Dung Duck Kung Duck

3.



Dung Duck Kung Duck Dung Duck Kung Duck

4. DOUBLE- DOUBLE-



Dung Duck Kung Duck